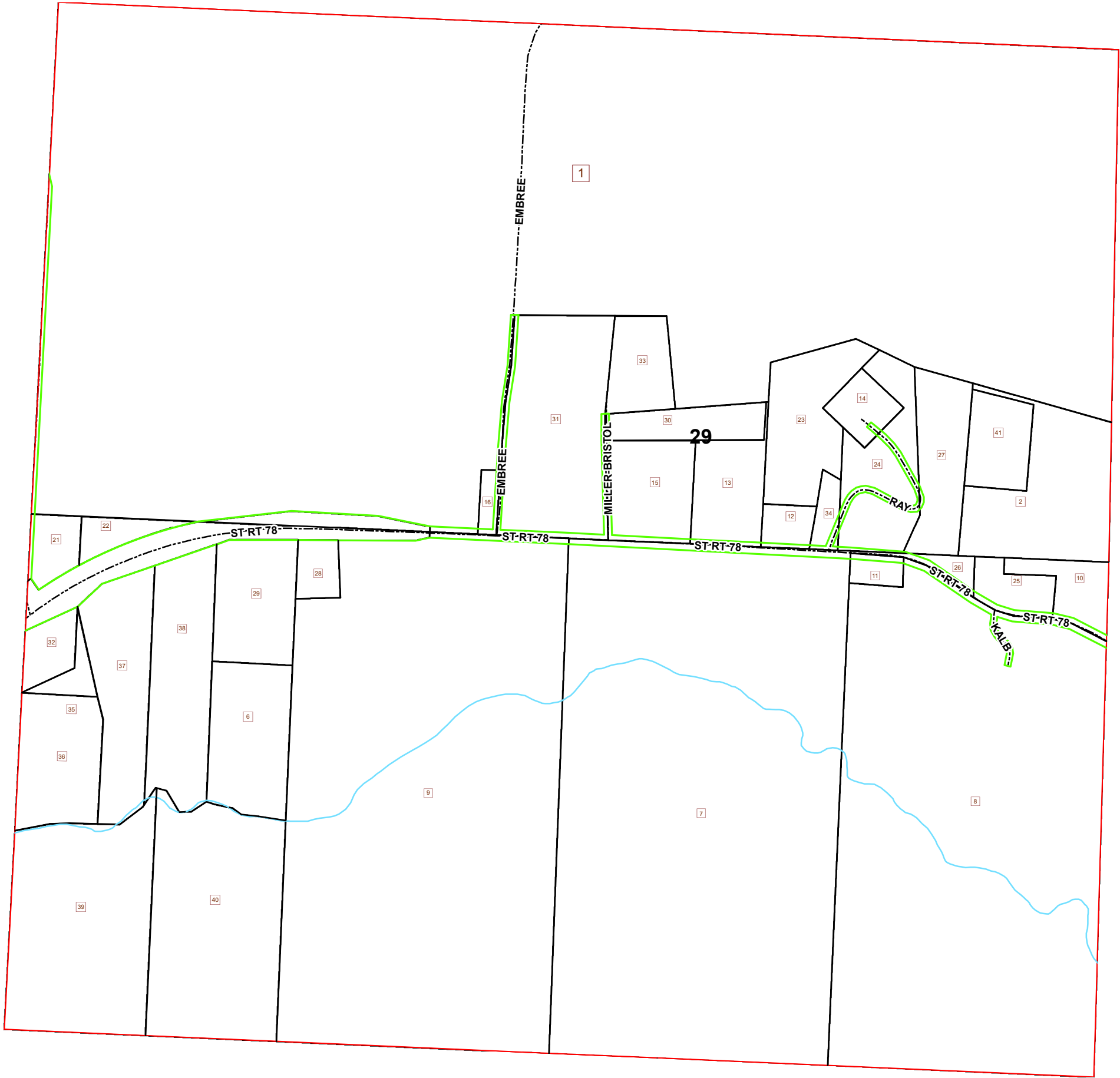
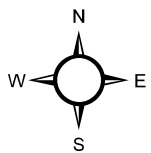


# BRISTOL TOWNSHIP SECTION 29 R 11 TWP 11 MORGAN COUNTY, OH

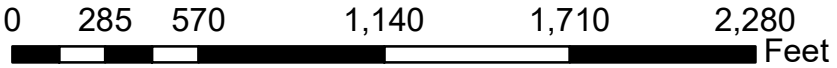


PIN	VOL	PAGE	Owner	LegalDescr	Acres
020-005-750-0	OR229	1216	ABLE LUKE J II & STEFANIE	R11 T11 S29 SD 12 E	1.37
020-005-760-0	OR229	1216	ABLE LUKE J II & STEFANIE	R11 T11 S29 SD 23 E	7.08
020-600-040-0	D.V 118	517	BRISTOL TOWNSHIP TRUSTEES	R11 T11 S29 SD 16	1
020-002-810-2	OR226	5	BURCHETT ELLEN A	R11 T11 S29 SD 32	2
020-002-810-3	OR226	5	BURCHETT ELLEN A	R11 T11 S29 SD 35	1.103
020-011-220-0	OR209	3468	DAVIS JOHN A	R11 T11 S29 SD 25	2.211
020-002-710-0	OR16	703	DINGEY DAVID	R11 T11 S29 SD 21	1.8
020-000-120-1	OR199	416	DINGEY DUANE A & PAMELA S	R11 T11 S29 SD 28 S	1.533
020-002-810-4	OR228	2718	ELLEN A BURCHETT	SD 36	6.7
020-002-810-6	OR229	826	ELLEN A BURCHETT & RYAN E WEAVER	R11 T11 S29 SD 38 T	9.44
020-003-020-0	OR234	187	HARRIS BARBARA L	R11 T11 S29 SD 8 "IN	78
020-000-120-0	OR226	3029	HITE PROPERTIES OF MORGAN CO LLC	R11 T11 S29 SD 9	82.057
020-005-740-0	OR195	579	KALB JOHN S & TERESA L	R11 T11 S29 SD 2 1/	10.69
020-005-740-2	OR231	48	KALB JOSHUA J	R11 T11 S29 SD 41	3.564
020-002-810-8	OR229	836	KENTON L WEAVER	R11 T11 S29	18.65
020-003-080-0	OR196	202	LAWRENCE NINA M	R11 T11 S29 SD 15 S	5.511
020-011-220-1	OR50	280	LAY JEFFREY L & MICHELER	R11 T11 S29 SD 26 S	0.996
020-005-030-1	OR171	534	MEIGS CHURCH OF CHRIST	R11 T11 S29 SD 31	14.373
020-003-080-1	OR141	786	MOORE CHARLES B II & DESRA M	R11 T11 S29 SD 30 S	3.209
020-005-031-1	OR194	713	MOORE CHARLIE B II & DESRA M	R11 T11 S29 SD 33 S	3.627
020-005-050-0	OR219	3123	OHIO FRANKLIN REALTY LLC	R11 T11 S29 SD 7 J	90.9
020-005-040-0	OR234	3634	OHIO FRANKLIN REALTY LLC	R11 T11 S29 SD 1	273.88
020-005-730-0	OR127	126	RAY BETTY A	R11 T11 S29 SD 11	1
020-005-670-0	OR100	670	RAY BETTY A	R11 T11 S29 SD 14	2
020-005-740-1	OR100	670	RAY BETTY A	R11 T11 S29 SD 27	5.602
020-005-680-0	OR127	126	RAY BETTY A	R11 T11 S29 SD 24 E	6.98
020-005-820-0	OR150	165	ROBERTS JERRY L & NANCY L	R11 T11 S29 SD 13	4.46
020-002-810-5	OR229	821	RYAN E WEAVER	R11 T11 S29 SD 37	8.25
020-005-850-0	OR147	778	SMITH DONALD J & JANICE Y	R11 T11 S29 SD 22	1.63
020-005-750-1	OR209	444	SPEARS BROC A	R11 T11 S29 SD 34	1.13
020-600-170-0	D.V 127	227	STATE OF OHIO	R11 T11 S29 GREER	4.79
020-600-160-0	D.V 127	227	STATE OF OHIO	R11 T11 S29 CAMPB	0.91
020-002-810-1	OR216	2962	WEAVER BARBARA J TRUSTEE	R11 T11 S29 SD 29	6.278
020-002-810-0	OR216	2962	WEAVER BARBARA J TRUSTEE	R11 T11 S29 SD 6	7.4
020-002-810-7	OR232	3527	WEAVER RYAN	R11 T11 S29 SD 38	18.65
020-002-740-0	OR224	2759	WICKHAM PAUL S & JOY E	R11 T11 S29 SD 10 S	2.77



Boundaries	
— Hydro	— ROW
— Lot	— Section
— County	— Parcel
— Township	— Roads
— Bristol Sections	

Source: Morgan County Engineer's Office  
 Author: Marcia Wolfe  
 Date: 6/4/2020



Disclaimer: The information that these maps contains is for reference purposes only. Please bring any errors to the attention of the Engineer's Office staff.  
 Thank you